



inTELi Platform

by inProjects

network HLD and business analytics

ABOUT inProjects

inProjects is a project house which combines knowledge and experience from two main technical fields:

- designing and building telco solutions
- software and product development

The company has been operating in the market for 10 years; inProjects' services include:

- **network concepts, HLD** (more than PLN 1.5 billion in subsidies obtained for the clients);
- **network design** (we have been creating fibre optic construction and implementation projects for the biggest Polish operators);
- **systems development** (our software team builds dedicated platforms, e.g. [fully-verified.com](https://www.fully-verified.com)).

WHAT IS inTELi PLATFORM?

inTELi is an HLD (High Level Design) and business intelligence GIS platform which helps to answer telecommunication investment questions – for example:

1. What is the length of the network that needs to be built?
2. Which areas are most cost-effective for fiber network investment?
3. Which areas are least cost-effective for fiber network investment and should be supported with EU funds?
4. How many households will the (simulated) network cover?
5. What is the level of coverage of 5G or LTE in the area?

inTELi CHARACTERISTICS



PLATFORM

telco-oriented,
business
intelligence
analytics GIS
platform



INDICATORS

enables the
calculation of
over 20 business
indicators



MAP PORTAL

provides an
overview of the
specifics of the
selected area



NETWORK

inTELi generates
automatic
network routing
(basic HLD)

inTELi BENEFITS

01

MAXIMISATION

Finding the best areas for public and private investment in telco infrastructure

02

EFFECTIVENESS

starting more effective use of broadband development funds

03

IMPACT

increasing the impact of development programs

04

REDUCTION

reducing the costs of preparing a telecommunications investment

inTELi GOALS

support the digital
transition

increase the pace of
investments in areas
beyond the reach of
next-generation access
networks

optimize costs of
infrastructure
construction
(fiber and 5G)

increase the
competitiveness of small
and medium-sized
enterprises in local
telecommunications
markets



LAUNCHED IN POLAND

At the request of the **Electronic Communications Office (UKE)**, which is under the supervision of the **Ministry of Digitization** in Poland, **inProjects** provided the inTELi platform.

The platform is designed to help entrepreneurs analyze telecommunications investment opportunities based on data held by UKE, as well as on the basis of publicly available data.

The area of the whole country was analyzed with the use of the platform.

Launched in April 2021.

EXAMPLES OF INDICATORS

number of
address points
without access
to broadband
internet

number of
active
operators

demand for
broadband
lines reported
to UKE

possible usage of
existing
telecommunications
infrastructure

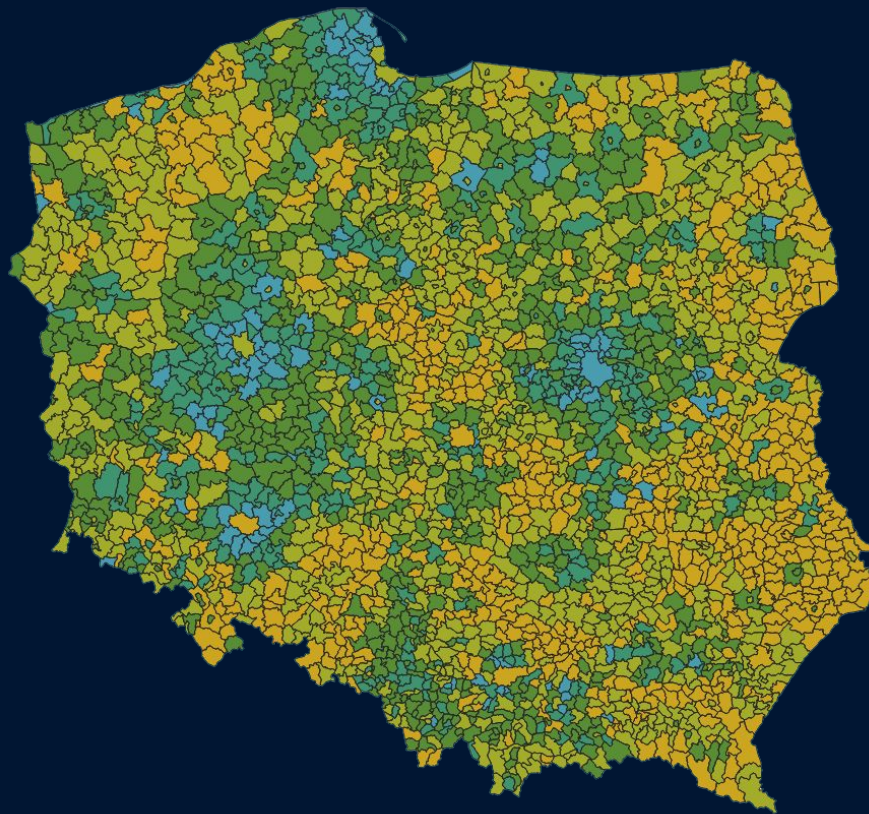


number of
households
and address
points in area

geographic
data of the
area

average
income per
person

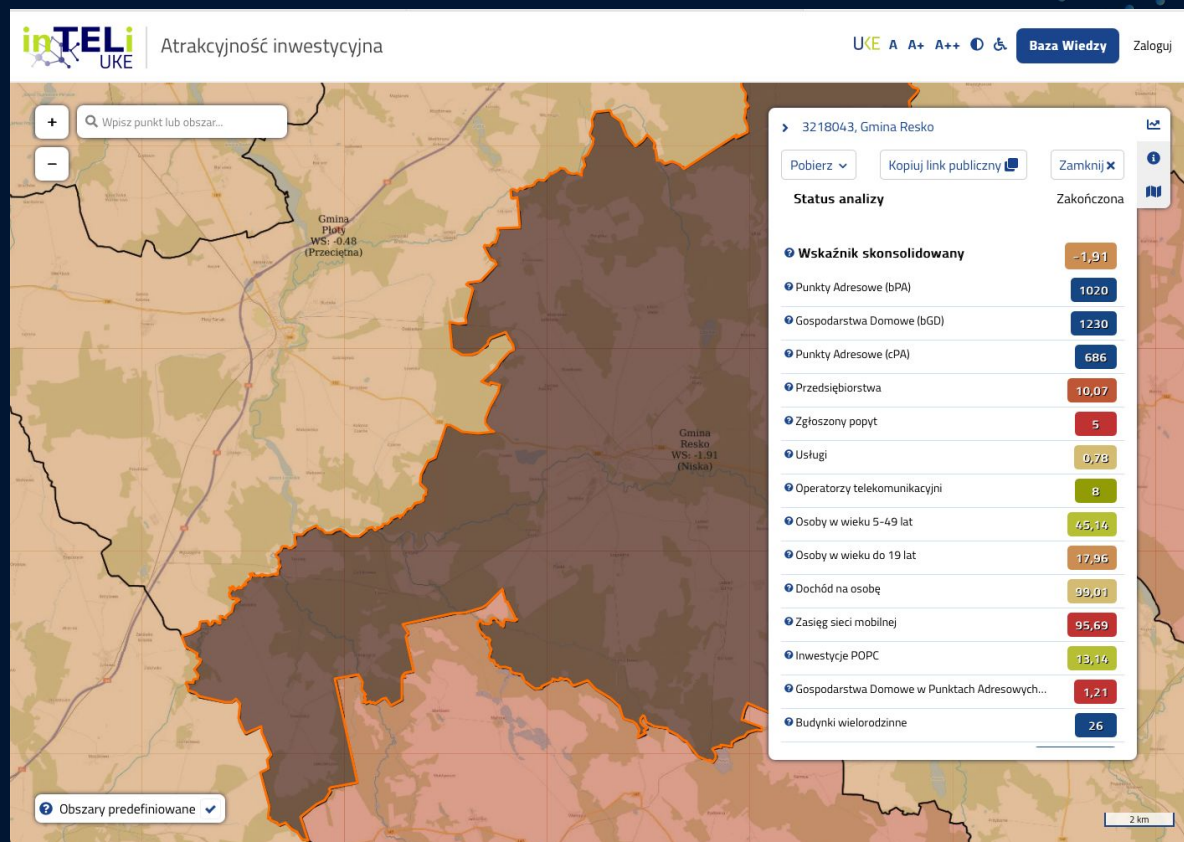
inTELi REAL CASE STUDIES



inTELi REAL CASE STUDIES



inTELi REAL CASE STUDIES



inTELi platform CASE STUDIES

1. Choose which towns or estates are to be considered for a telecommunications investment.
2. Compare and rank analyzed areas based on the set of indicators returned by inTELi.
3. Using the API, easily analyze thousands of areas (it is enough to send a polygon with an area boundary to the system).

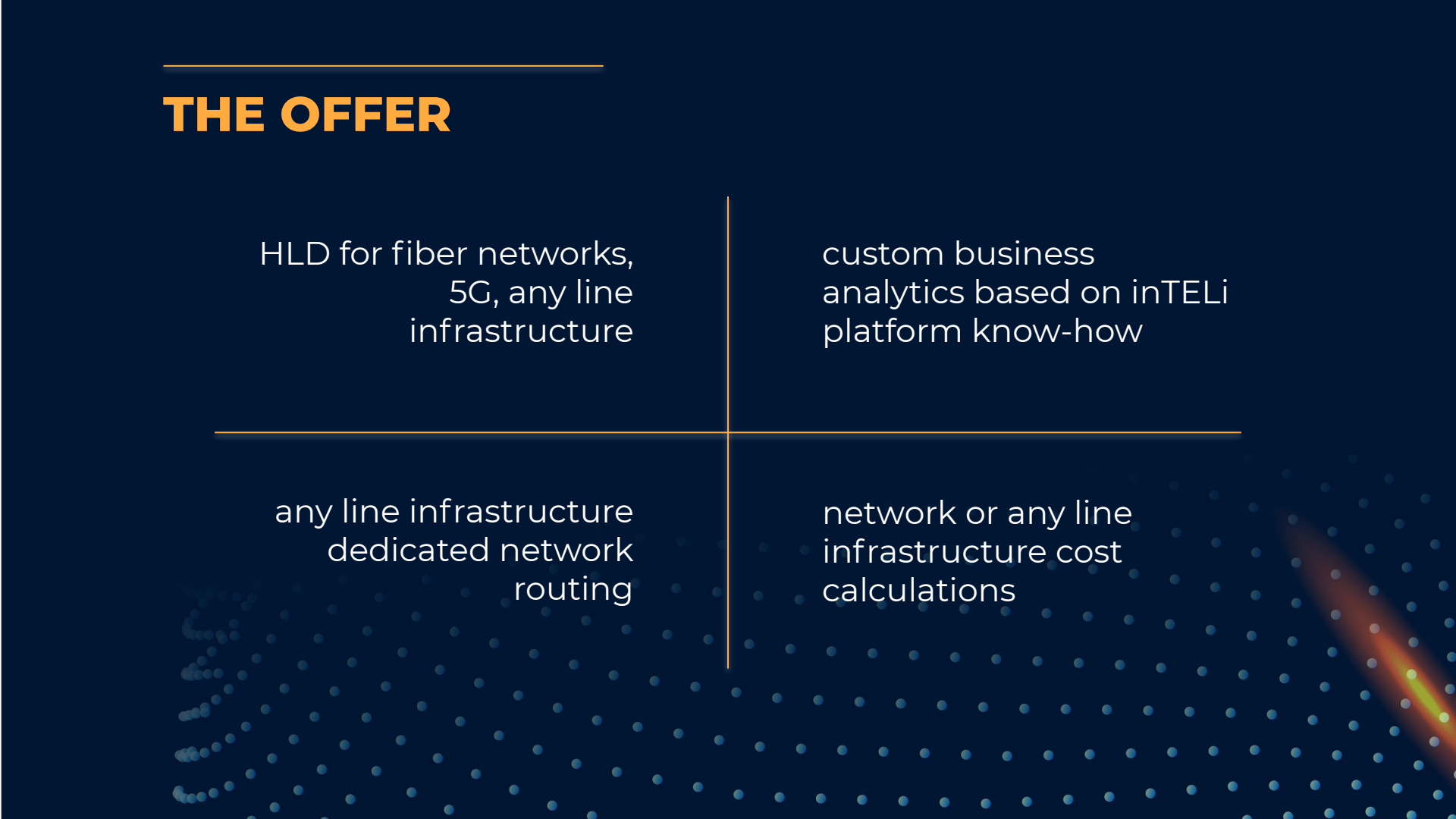
THE OFFER

HLD for fiber networks,
5G, any line
infrastructure

custom business
analytics based on inTELi
platform know-how

any line infrastructure
dedicated network
routing

network or any line
infrastructure cost
calculations





THANK YOU FOR YOUR TIME

For more detailed information,
please contact us.

Maksymilian Kuśmierek
Business Development Manager
+48 881 222 505
maksymilian.kusmierek@inprojects.pl